



WASHING MACHINE

USER MANUAL



Content

Warning -----	2
Safety Notifications-----	3
Part Name -----	4
Installation Instruction -----	5
Methods of Door Lock and Remove -----	9
The Usage Method of the Detergent Box-----	10
Function Introduction of Operating Panel -----	11
The Introduction of Function and Program -----	13
Maintenance -----	14
Notice before Washing -----	16
Non-fault Conditions-----	18
Troubleshooting Guide -----	19
Specification -----	20
Environmental Protection -----	21

WARNING

- This appliance is not intended for use by persons(including children)with reduced physical, sensory or mental capabilities,or lack of experience and knowledge, unless they hare been given supervision or instruction concerning use of the appliance by a person responsible for their safety.
- Children should be supervised to ensure that they do not play with the appliance.Cleaning and user maintenance shall not be made by children without supervision. Children of less than 3 years should be kept away unless continuously supervised.
- If the supply cord is damaged. it must be replaced by the manufacturer, its service agent or similarly qualified persons in order to avoid a hazard.
- The new hose-sets supplied with the appliance are to be used and that old hose-sets should not be reused.
- This appliance is intended to be used in household and similar applications such as:
 - staff kitchen areas in shops, offices and other working environments;
 - farm houses;
 - by clients in hotels , motels and other residential type environments;
 - bed and breakfast type environments;
 - areas for communal use in blocks of flats or in launderettes.
- For washing machines having ventilation openings in the base, the openings must not be obstructed by a carpet.
- Manual loss , Call our service number.
- Water pressure:0.03-1MPa
- **CAUTION:** In order to avoid a hazard due to inadvertent resetting of the thermal cut-out, this appliance must not be supplied through an external switching device such as a timer, or connected to a circuit that is regularly switched on and off by the utility.

Safety Notifications (Please Must Follow)

- In order to prevent the harm or damage to the user or the person and property of others, please make sure to follow the safety issues.



- The risk of electric shock.

1. Please use 220V-240V, above 10A with ground wire dedicated socket.
2. When inserting and pulling out the power cord please use the plug, please don't use the damaged power cord. When the power cord pin is dirty please wipe clean with dry cloth in time.
3. Do not use the wet hand to insert or pull out the plug.
4. Please pull out the plug when finishing, repairing or cleaning.

- The danger of fire and current leakage

1. Do not allow the washing machine close to the fire, or lighted cigarettes, candles and volatile materials.
2. Please do not sprinkle the water on the control panel of washing machine.
3. Please do not put the washing machine in the place of wet and outside place.
4. Please fix the drain pump and make sure the sewer unobstructed.

- The danger of high temperature

1. When washing in high temperature, the door glass will be heating. Please do not touch the door glass, especially children.
2. When opening the door after high temperature washing, please wait for the temperature cooled down to a safe level and the door will unlocked automatically.

- The danger of getting hurt

1. Please handle the carton box after removing, don't let the children touch or eat.
2. Do not allow the children to operate or climb up to the washing machine.
3. Please close the door after use to avoid the children enter into the drum.

- The danger of injury

1. Do not put any heavy things on the top of the washing machine.
2. If you want to move the machine, please remember ask for help.
3. Please do not ask unprofessional people to repair the machine.

- The danger of damage the cloths

1. Please do not wash the cloths which is waterproof, like raincoat, feather products, sleeping bags
2. Please wash the cloths which can be washed, if you have any doubt, please following the instructions.


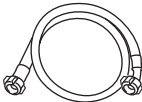

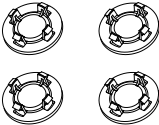
- The danger of explosion

1. Please do not washing the cloths which stained with kerosene, gasoline, thinner, inflammable goods.
2. Please do not washing when gas leakage.

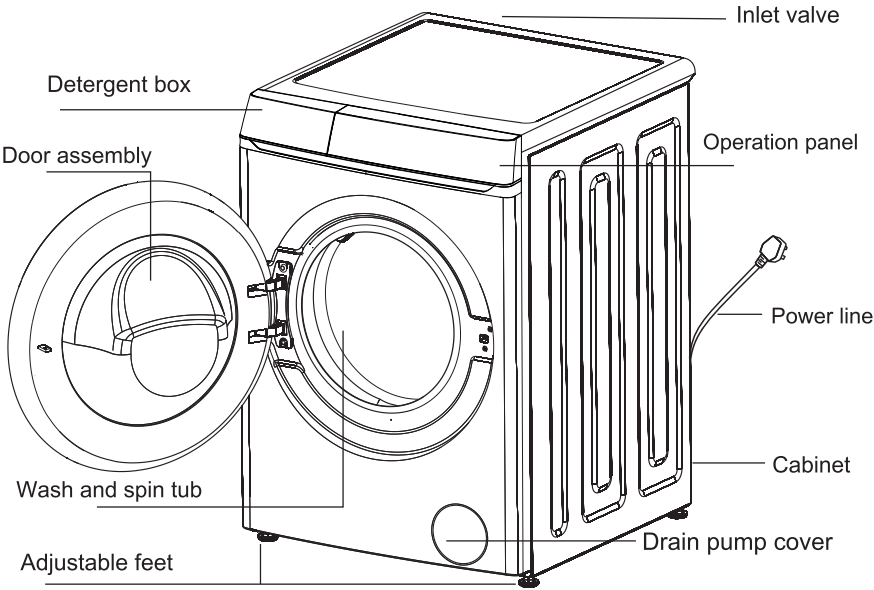
- When pull out the plug, the lock can be unlock even if there is lot of water inside. So please check the water level inside before unlock the door in order to avoid the unnecessary loss.

Part name

Attachment specification

instruction	water supply hose	wrench	transportation bolt caps
			

Part name



Important notice:

- 1.The product appearance and specifications may be varied without notice to raise the product quality.
- 2.The product appearance and specifications may be varied with that of the related energy efficiency test or the related safety test,etc.

Notice :

- 1.The first use may drain some water out. It's residual water after performance test, belong to the normal phenomenon.
- 2.After each use, please pull the plug and turn off the faucet to prevent accidental flood or fire.

Installation instruction

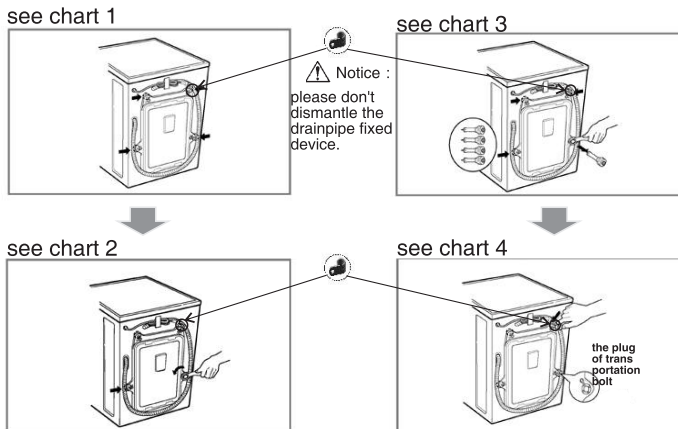
- Make sure the temperature of the places where the washer is installed or placed above 0°C or put it outside.
- Place the washer correctly according to management standards and regulations.
- Keep the base of washer ventilated when it is placed on the ground with carpet.
- There are too much pests in villages. Please keep the surroundings clean because any damages caused by cockroaches or other pests don't belong to warranty.

Transport bolt

Washers are installed with transport bolt to prevent internal damage in transit.

Dismantle the transport bolt

1. In order to prevent internal damage in transit, 4 bolts are installed. Before using the washer, dismantle the bolt (see chart 1).
- If the bolts are not dismantled, violent vibration, noise and trouble will be caused.
2. Use the attached wrench to loosen the 4 bolts (see chart 2).
3. Twist the bolt rubber slightly and then pull out the bolts, keep the bolts and wrench as standby (see chart 3).
- The bolts should be remounted no matter when to transport the washer.
4. Use attached stopples to seal the screw holes (see chart 4).



Requires for positions

Horizontal adjustment:

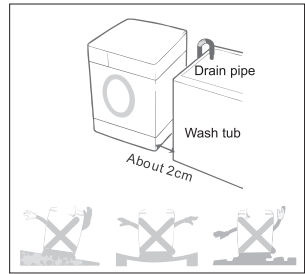
- The slant angle should be less than 1 degree.

Power outlet

- The distance between any side of washer and power outlet should be within 1.5 meters.
- Don't use too many electrical appliances in one outlet.

Environment cleaning

- It's necessary to clean the wall, door and ground.
- Install the washer on a hard and steady ground with floor drain rather than soft blanket or wooden floor.
- Don't put dirty clothes or some other goods on a washer's head cover, otherwise it may impact the normal operation.



⚠ Notice

Power connection

1. Don't use the wiring board or something like that.
 2. If the power lines are damaged, please contact professionals to repair.
 3. After the use of washer, pull the plug and turn the tap off.
 4. Connect the washer with grounded outlet to correspond to the wiring principles.
 5. Place the washer in which is easy to connect the outlet.
- Contact the maintenance center and ask professionals to repair the washer. Laypeople may cause damages and troubles on the washer.
 - Don't put the washer in the place where the temperature is below zero. The pipes will be frozen and break. Moreover, the temperature below zero will damage the programming controller.
 - If move the washer in an environment whose temperature is below zero, please keep the washer at room temperature for a few hours before starting it.

Grounding introduction

- A washer must have the grounding devices. If a trouble happens, the device can reduce the risk of electrical shock. The device is equipped with a cable (including a wire and a grounded plug). The grounded plug must be inserted in an appropriate outlet. If you want to know if the washer is grounded correctly, please contact with professional maintenance staff. If the plug can't match with the outlet, please don't change the plug by yourself.
- Once your washer smokes or emits an odor, please cur the power and contact with professional maintenance staff.

Washers should be connected with water inlet. Please use attached new plumbing rather than the old.

In order to ensure the quality, water injection tests are carried out before the washer leaves factory, so there may be water inside the internal tub, door seals and door panel, which are normal.

Water inlet connection

1. The pressure of supply water should be between 30kPa and 1000kPa.
 2. Don't abrade the screw thread when connect the inlet pipes with valves.
 3. Please install dropping equipment if the pressure of supply water surpasses 1000kPa.
- Two seals are supplied in the connectors of both ends of the pipe to prevent water leaking.
 - Turn on the tap and check if the connectors leak.
 - Check the pipes regularly. Please change them if necessary.
 - Make sure the pipes don't be damaged or twine with each other.

Use the standard faucet

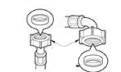
standard faucet



longer faucet



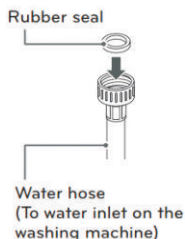
square faucet



water pipe connector
rubber gasket

The connection of inlet pipes and taps

- 1 Check the rubber seals on both sides of the hose.
-insert a rubber seal into the threaded fittings on each hose to prevent leaking.



- 2 Connect the water supply hoses to the water faucets tightly by hand and then tighten another 2/3 turn with pliers.
-Connect the blue hose to water faucet.



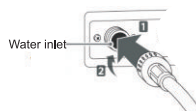
⚠ WARNING

- Do not overtighten. Damage to the coupling can result.

- 3 After connecting inlet hose to water faucets, turn on the water faucets to flush out foreign substances (dirt, sand or sawdust) in the water lines. Let water drain into a bucket, and check the water temperature.



- 4 Connect the hoses to the water inlet tightly by hand and then tighten another 2/3 turn with pliers.



⚠ WARNING

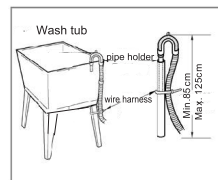
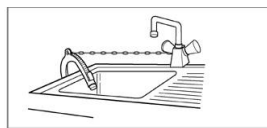
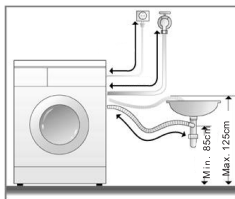
- Do not overtighten the hoses. Overtightening can damage the valves resulting in leaking and property damage.

- 5 Check for leaks by turning on the faucets. If water leaks, check steps 1 to 4 again.

- Such washing machine is designed for home appliances, please do not install it on ship, traveling truck or plane.
- Please turn off the stopcock if long time out of use.
(e.g vacation)
- Please remove plug and cancel door lock function to avoid child locking himself/herself inside.
- Packing materials(e.g film, foam) could harm child's safety and cause asphyxia! Attention: **MAKE ALL PACKING MATERIEALS OUT OF CHILD REACH.**

Install drain-pipe

- Please fix the drain-pipe by a lifting rope.
- For the sake of lightening damage of leak towards ground, please place the drain-pipe correctly.
- In order to avoid siphon,the height of drain-pipe should between (0.85m-1.25m),moreover, the terminal of is should not be placed in water.
- If the drain-pipe is too long, please do not force to insert it into washing machine, which would cause abnormal noise.
(Please check sketch map next page)



The instruction of installation of pipe

Horizontal Adjustment

- To avoid noise and vibrate by adjusting washing machine level. place it at the room corner preferably.
- If ground not level, please adjust alignment pins. Do not put wood pieces or something like, please make sure four alignment pins touch ground tightly, and machine level completely.

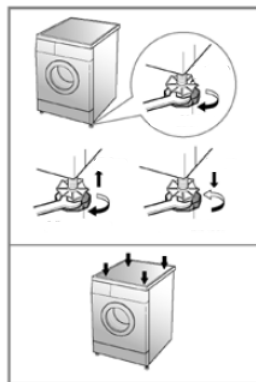


- **Adjust adjustable feet**

Adjust the adjustable feet to make sure the washing machine in balance, which can be placed on the ground steadily. After settling, screw the locknut to guarantee. Do not place the washing machine in the platform, which is higher than the ground, in order to prevent the machine from falling down because of other accidents.

- **The diagonal check**

Applying force downward on the diagonal of the washing machine, washing machine should not shake. (both diagonal need to check, if the washing machine shake, must readjust adjustable foot.)







Methods of Door Lock and Remove

Door locking / unlocking

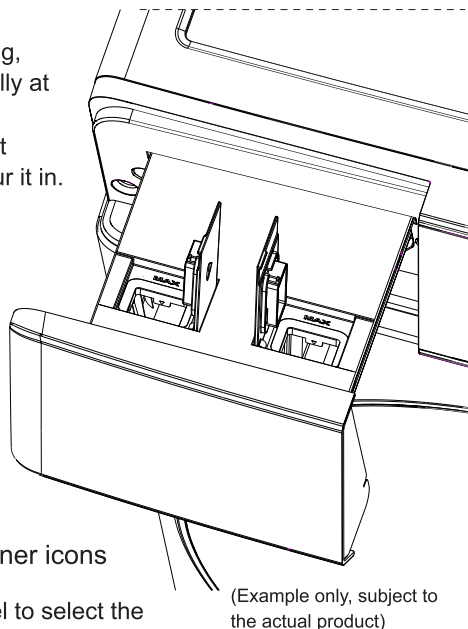
- The door will lock automatically after a laundry program starts. At this time, the door lock lamp is on.
- Press the “start / pause” key, and wait for a few seconds after the washing / dewatering tub stops rotating. If the door opening conditions are met, the door lock will be released automatically, and the display screen shows that the door lock light is off.
- The door cannot be opened either during high temperature operation or under high water level in washing.
- When the door cannot be opened, the emergency door opening device can be used in case of emergency.

The Usage Method of the Detergent Box

-  Fabric softener
 - Please add fabric softener before washing, which will be injected into tub automatically at the last rinsing.
 - For concentrated softener, please dilute it evenly with a proportion of water and pour it in.
 - Do not exceed the “Max” line.
-  Liquid detergent - bleaching agent
 - Please use low foam liquid synthetic detergent.
 - For concentrated liquid detergent, please dilute it with twice the water and inject it into the detergent box.
 - Do not exceed the “Max” line
-  liquid detergent and  fabric softener icons

Press the “i-Dos” key on the control panel to select the opening and closing of detergent / softener.

- Open when the icon is lighting
- Close when the icon is not lighting
- Add remind when the icon flashes



 Use special detergent for front loading washing machine.

Do not add excessive detergent, which could generate overmuch foam, and further affect the rinsing effect or lead to malfunction. Please use detergent with reference to the instructions of detergent manufacturer, as well as the type, color, water temperature, pollution degree of clothes. Using an appropriate amount of detergent can lead to good washing effect, conducive to environmental protection.

Precautions for use:

- ① The drawer must be closed to enable the detergent to be injected into the tub.
- ② In case of drying and high temperature, it is normal to have condensate when the drawer is opened.
- ③ If the detergent / softener is frozen because of non-use for a long time, the frozen detergent / softener should be cleaned up to ensure good washing effect.

Function Introduction of Operating Panel



Image shown here is indicative only. Actual product you receive may differ.

1. On/Off Button


- Turn power ON/OFF.
- When procedure finish, press On/Off to cut off power.

2. Start/Pause Button

- Press it to start operating
- Press it to pause during operation, press again to continue.

3. “My Cycle” Button

Set or call up common programs and parameters

- (1)Memory saving: long press the “memory key” after startup to save the parameter configuration.
- (2)Memory call out: press the “memory key” after next startup to call out the previously saved parameters for rapid setting.
- (3)After the memory saving or call out, the memory icon light (heart-shaped icon ) above the memory key under the nixie tube will light up.
- (4)In case of memory saving, issue “Ding Dong” sound twice; In case of memory call out, make three “Ding Ding Dong” sound in triple.
- (5)Memory saving function only saves one of the most commonly used or preferred modes, with no saving of more than one parameter configuration.

4. “Speed” Button

- Under a program and in the pause state, click the speed key to display the current set speed in the remaining time screen.

5. “Rinse” Button

- When push the power button to start the machine and select the program, you can choose the times of rinse by this button, which can make better washing performance.

6. "Temp." Button

- When a program is selected, the time screen displays the current set temperature.
- You can choose proper water temperature according to the material of cloths.

7. "Delay" Button

- Long press "Temp." button to turn on or off the "Delay" function.
- After a program is selected, set the reservation time, which is the end time of the washing program. Display the current reservation time in the remaining time screen, cancel the reservation and return to the current remaining time display.

8. "i-Dos" Button

- Click this key to turn off and turn on the automatic add function of detergent and softener.
- After opening, an appropriate amount of detergent and softener solution will be automatically added according to the weight of clothes.

9. "UV" Button

- After selecting the program you need, select the button before running the program to activate the "UV" function. After being turned on, it cannot be cancelled. After selecting another program, it will be turned off by default. If you need to turn on the "UV" function again, you need to press this button again.

10. Display panel

- Show the remaining time, reservation time and fault code during operation ;
- Show the water temperature, rinse times, spin speed and delay time when the option is adjusted.

11. Program selection

- Select the corresponding program by clicking the touch button.
- After clicking the "Start/Pause" button, all the lights of the selected program will be on, while all the lights and function lights of other programs will be off, and the display screen will display the remaining running time.

The introduction of function and program

Smart Wash	For general cotton fabrics
Quick 15'	A small amount of thin clothes with slight contamination
Rapid 30'	A small amount of thin clothes with slight contamination
Duvet	Machine washable sheets / curtains, etc.
Wool	Machine washable wool fabrics
Down Jacket	Machine washable down clothes
Underwear	Intimate underwear
Super Spa	It means long-time washing at high temperature, and is suitable for the clothes, bedding and plush toys with high sterilization requirements and sensitive to mites and pollen
Shirts	Shirt clothes
Soft Wash	Easily deformable clothes such as sweaters and dresses of 2kg and below
Sports	Machine washable sportswear
Tub Clean	Tub self-cleaning, with no clothes
Spin Only	Separate dewatering
Rinse+Spin	Separate rinsing and dewatering

Maintenance

- Please maintenance washing machine to extend service life.
- Before maintenance, please unplug.

Body of washing machine

After washing, please clean it with soft cloth. If much contamination, please use appropriate detergent or soap.

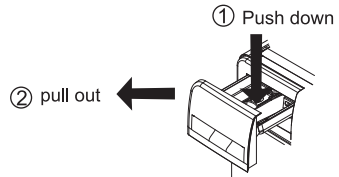
- Do not watering directly.
- Do not use putty-powder, diluent, gasoline, alcohol to clean machine body.

Door Gasket Ring

After washing, please remove contamination, wastepaper and so on, if foreign matter exists, please remove.

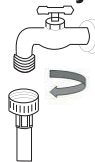
The Clearance of Detergent Box

Please clean the detergent box regularly. Pull it out and wash with clean water, then insert back.



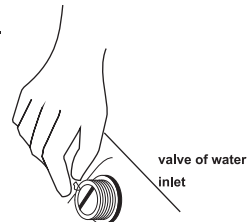
The Clearance of Universal coupling (Suggest:Once/ half year)

- If waste accumulated, it will influence water inlet speed.
 - 1.Take off the soft pipe from connecting part side.
 - 2.Take off the screwing device according to the arrow showed.
 - 3.Wash the inside of the screwing device.
 - 4.Install the cleaned crewing device with the inlet soft pipe.



The clearance of inlet water valve (Suggest:Once/ half year)

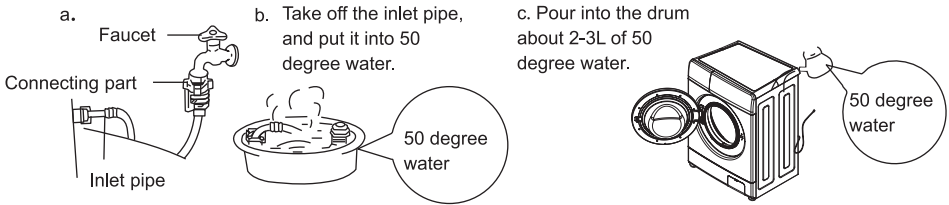
- 1.Take off the soft pipe from washing machine side.
- 2.Take off the filter net from water valve.
- 3.Clean the filter net with tooth-brash.
- 4.Install the soft inlet pipe.



Maintenance

When washing machine is frozen

1. Cover stopcock and connecting part with hot towel.
2. Take off the inlet pipe, and put it into 50 degree water.
3. Pour into the drum about 2-3L of 50 degree water.
4. Connect inlet pipe, turn on the stopcock and start the washing machine, please check whether inlet and outlet is normal.



The Clearance of dewatering-pump filter(Suggest: once/month)

1. Press fastener on the pump after dewtering and power off, open the lid of water-pump filter.(Attention: if hot water inside, please go ahead after it be cold.)
 2. Take off the filter anti-anticlockwise.
 3. Wash the filter.
 4. Direct at pump and insert the filter, tighten it clockwise and tighten the lid.
- Attention: a. Please tighten the filter well to avoid leak.
b. Please do not clean during operation.

The Drum Clearance (Suggest once/month)

After using for a period, some dirt maybe exist. You can clean the inside and outside of drum by operating the drum procedure.

Attention: please do not put cloths and detergent when clearing the drum.

Notice before Washing

1.Washing guide identification

- Please check cloths washing guide identification ,which shows cloths texture and washing method.

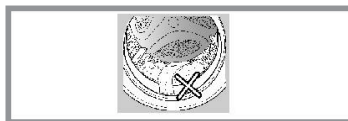
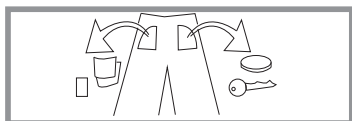
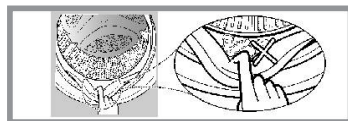
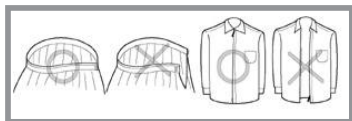
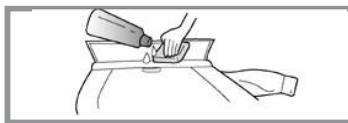
2.Classification washing

- Please wash cloth of the same texture, different texture, different water temperature, speed and washing procedure, please split deep colored cloths from white cloths.Split dyed cloths from cotton, otherwise the white cloths would be discolored. If possible,please do not washing high contaminated cloths with clean ones together.
- The degree of pollution (serious, moderate,slight) classify clothes and wash according to the degree.
- color (white, light color, deep color) classify them and wash.
- velveteen (easy to fall off, easy to be adhered) classify the white and the deep color.

3. Notes

- When put big and small clothes together, put the big first and they have to be less than half of total clothes. Please don't wash single cloth because it may cause the trouble of imbalance. Please add one or two similar clothes.
- Small clothes like silk stockings and handkerchiefs should be put into mesh bags to wash. Before washing the bra with steel rings, please take the rings off. If it is inconvenient to do this, please put them into mesh bags to prevent the bra slipping into the gap between internal and external tubs.
- Check all pockets and make sure nothing in them. Nails, hairpin, match, pen, coin and key will damage your washer and clothes.
- Zip up all clothes, fix the button and hook and tie the loose belt, make sure that other clothes cannot be damaged by them.
- Firstly use the water with a little detergent to wash the parts with too many stains, such as collar and cuffs, which can make the clothes cleaner.

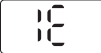




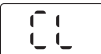

- Check the door seals and make sure nothing on them.
- Make sure there is nothing in the tub before washing.
- Please use the low bubble detergent specially for front loading washing to wash the cloths.



Non-fault conditions

Status	Phenomena	Causes
Before operation	Residual water in the washing machine	The washing machine undergoes quality inspection before delivery, so it is normal to have a small amount of residual water in the tub.
	"Tub clean" after startup	In case of clothes washing with temperature lower than 60°C for a long time, the washing machine will automatically remind to run the tub clean program until the high temperature washing program has been performed. It is permitted to ignore the reminder and select another program.
During washing	Rustle sound in the tub	Silver ion sterilization tablets exist in the tub
	No water during washing	For water-saving washing machine, the washing water level under some program is below the door glass.
	Not add clothes halfway	Only some low water washing programs permit clothes adding during washing. Door opening must meet the conditions of safe water level and temperature, which is also related to the number of clothes and water absorption performance.
	Pause during laundry	Verify that the "pause" key is not pressed.
During rinsing	Undesirable cleaning effect	Less washing time and less detergent (many dirty clothes).
	White spots on clothes after washing	Washing powder is used. Water insoluble components of phosphorus-free detergent could adhere to clothes and generate spots. Select "rinsing + dewatering" for rinsing, or remove spots with brush after drying. In addition, please wash dark clothes and light clothes separately.
During dewatering	Poor dewatering effect	Single heavy clothes cause excessive eccentricity. Please wash large and small clothes together, and don't wash single heavy clothes.
	Large vibration	Confirm that the washing machine is placed at a hard horizontal ground, with the adjustable feet leveled and locked; the rear 4 bolts have been completely removed.
Other	Key malfunction	The child lock function is started when the program is running. The child lock light is on. Long press the " Rinse " key to cancel the child lock function.
	Peculiar smell	It is the gasket rubber smell of the new washing machine. Run the "tub clean" program in accordance with instructions. After washing, the door must be opened to keep the tub ventilated and eliminate moisture in the tub. Besides, clean the door gasket regularly.
	Program operation longer than usual	The eccentric sensing function is to achieve balance by distributing clothes in the tub for a long time; in case of too much foam, enter the de-foaming process: low water pressure and large water absorption in clothes for long water inflow time.

Troubleshooting Guide

Exception code	Hints/ Symptoms	Causes	Solutions
	Water inlet fault	<ul style="list-style-type: none"> ● Is the faucet closed, is water not supplied (low water pressure), and is water inlet hose frozen? ● Is the filter screen of inlet valve blocked? 	<ul style="list-style-type: none"> ● Turn on the faucet, etc. ● Clean the inlet valve filter screen (pull out the filter screen with nipper pliers and reinstall after cleaning).
	Drain fault	<ul style="list-style-type: none"> ● Is drain hose blocked by foreign matters? ● Is drain valve blocked by clothing debris? ● Is the orifice position of drain hose too high? 	<ul style="list-style-type: none"> ● Foreign matters at the outlet of the drain hose. ● Open the drain valve knob to remove debris. ● Reduce the height of drain hose orifice.
	Door locking fault	<ul style="list-style-type: none"> ● Door not closed in place 	<ul style="list-style-type: none"> ● Reclose the door.
	Dewatering fault	<ul style="list-style-type: none"> ● Bolts not removed? ● Washing machine off balance? ● Small amount of clothes? ● Excessive clothes or large clothes in groups? 	<ul style="list-style-type: none"> ● Remove bolts. ● Keep the washing machine flat. ● Add 1-2 clothes. ● Sort out clothes and restart.
	Power outage tip (only DD motor)	<ul style="list-style-type: none"> ● Power outage during operation? 	<ul style="list-style-type: none"> ● Directly press the "start / pause" key to continue the operation before power outage. ● Reset the washing machine.
	Child Lock (only DD motor)	<ul style="list-style-type: none"> ● Preventing children from mishandling. 	<ul style="list-style-type: none"> ● Long press the "Rinse" key to cancel the child lock function. Or turn off the power button
	Water leakage	<ul style="list-style-type: none"> ● Wrong connection of water inlet hose? ● Improper size of faucet? 	<ul style="list-style-type: none"> ● Connect the water inlet hose correctly; ● Use the faucet with qualified dimension.
	Water supply and drain at the same time	<ul style="list-style-type: none"> ● Incorrect height of drain hose? ● Drain hose and sewer unblocked? ● Drain hose buckle removed? 	<ul style="list-style-type: none"> ● Confirm that the lowest point of the drain hose is higher than the internal water level of the washing machine; ● Siphonage arise in case of clogged drain hose and sewer; ● Remove the drain hose buckle.
	Foam overflows from the detergent box	<ul style="list-style-type: none"> ● Low foam detergent not used? 	<ul style="list-style-type: none"> ● Use low foam detergent.
	Abnormal sound	<ul style="list-style-type: none"> ● Any coin, zipper, metal buttons? ● Slender matters, such as bra bracket in inner and outer cylinders; 	<ul style="list-style-type: none"> ● The sound when the inlet valve works and the sound of air-water mixing when the drain pump works are normal phenomena.
<p>After troubleshooting, please press the "start / pause" key for re-operation. In case of any faults not eliminated (codes not included in the exception code), please turn off the water and power supply and call the national service hotline for repair.</p>			

Specification

Rated washing capacity	12.0kg
Rated spinning capacity	12.0kg
Rated voltage	220-240V~,50Hz
Rated washing power	200W
Rated spinning power	500W
Rated heating power	1650W
Maximum power	1850W
External dimension	595*640*850mm

Specification,picture and feature are subject to change without prior notice for purpose of product improvement.

Environmental Protection

Correct Disposal of this product

This marking indicates that this product should not be disposed with other household wastes throughout the EU. To prevent possible harm to the environment or human health from uncontrolled waste disposal, recycle it responsibly to promote the sustainable reuse of material resources. To return your used device, please use the collection systems or contact the retailer where the product was purchased. They return and can take this product for environmental safe recycling.



