

145MM*210MM 16P 封面彩色，内页单黑 骑马钉

DAMA

ITALY

DVC -LEGEND

INSTRUCTION MANUAL



Important Safety Instructions

1. Read all instructions and warnings before using this appliance. Failure to follow the warnings and instructions may result in electric shock, fire or serious injury.
2. When using appliances, basic precautions should always be followed to reduce the risk of fire, electric shock and injury.

Warning !

1. The appliance is only for household use.
2. Before use the product, check whether the local voltage is consistent with the voltage marked on the power adaptor.
3. Inspect the product before use, stop use if the product or adaptor is damaged.
4. Use only as described in this manual.
5. This appliance can be used by children aged from 8 years and above and persons with reduced physical, sensory or mental capabilities or lack of experience and knowledge if they have been given supervision or instruction concerning use of the appliance in a safe way and understand the hazards involved children shall not play with the appliance cleaning and user maintenance shall not be made by children without supervision.
6. Do not use this product as a toy. Keep this product away from the reach of children. Take care of children and make sure they will not regard this product as a toy.
7. Do not touch plug with wet hand.
8. Use extra care when cleaning on stairs to prevent falling.
9. Do not use or disassemble or replace any component if there is damage on power cord, plug, battery or conductive parts. Disassembly or replacement of the components by yourself may cause electric shock or fire. **DAMA** will not take responsibility. Once damaged, the product need to be repaired or replaced by **DAMA**, **DAMA**'s distributor or qualified person designated by **DAMA** to avoid injury.
10. Recharge only with the adaptor specified by **DAMA**.
11. Only to use the battery pack specified by **DAMA**. Use of any other battery pack may cause explosion, injury and or product damage.
12. If the product does not operate in accordance with the instructions, is seriously impacted, falls from a height, is damaged, or falls into the water, do not use it and contact **DAMA** or **DAMA** distributor .
13. Only use **DAMA** specified replacement parts or attachments.
14. Do not pull or press the cable. Keep cable away from heated surfaces. Do not place the cable in a closed door or pull it through a sharp edge or corner. Keep the cable away from walking area. Do not operate product across the cable.
15. Unplug the product when it is not used or before repairing.
16. Do not drag the cord or carry cord to move the product, or use cord as handle.
17. The product is a rechargeable electric appliance. Do not leave the machine to run unattended
18. Remove battery pack when the product is cleaned, repaired or long idled.
19. Do not get close to heating appliance or expose under sunshine longtime, to prevent over heating causing housing deformation.
20. Keep objects that may obstruct air path from air inlet and outlet to prevent machine overheating.
21. Product mainbody and floorhead have electric components, cannot be washed under water.
22. Do not clean or disassemble brushroll cover or brushroll when the machine is power on or under working to prevent injury.
23. Do not use the product to pick up flaming objects like burning charcoal or cigarette etc.
24. Do not use the product to pick up sharp objects like broken glass.
25. Do not use the product to pick up lime, cement, toner, gypsum powder, flour and other ultra-fine substances.
26. Do not use the product to pick up acid-base cleaning liquid, washing powder and other corrosive liquids.
27. Do not use the product to pick up inflammable and explosive objects like gasoline, alcohol, perfume, paint, etc.
28. Do not disassemble the closed machine, and do not try to change the performance of the machine. Only get help from the professional personnel of the manufacturer, its maintenance department or similar departments, otherwise it will cause danger.
29. Turn off power and unplug charger if the products is long idled.

30.Product technical specification of this manual are based on results from lab tests of **DAMA** or designated third parties. The company reserves all rights for final explanations.

About use of the product

- 1.This product is suitable for hard floor in indoor environment, including waxed floor, rubber floor, tile floor and sealed wood floor, solid wood floor and other flat surface, use of the product on unflat ground may not achieve the best effect.
- 2.Do not turn on the machine before dirty water tank and clean water tank are assembled in place according to instruction.
- 3.Do not shake the product up and down or collide violently to prevent dirty water from flowing into the motor; when the product is turned on, do not lift or carry the machine up and down, and do not tilt the product to one side or lay it flat on the floor to prevent dirty water from flowing into the motor.
- 4.Do not run the product for a long time with the float blocking the air inlet to avoid damage.
- 5.After using the product, clean the dirty water tank, suction nozzle, air path and store it in ventilated and dry place. Wet place will affect the insulation and life of electrical appliances.





About Cleaning Solution

- 1.A large amount of cleaning solution entering into the motor may cause damage to the appliance.
- 2.Mix the solution with clean water according to the instructions (the ratio of solution to clean water is 1:50). It is recommended to use provided cleaning solution. Do not use cleaning solution contains acid, alkali,alcoholic solution or substances harmful to the environment.
- 3.Keep cleaning solution out of reach of children. If any solution gets into the eyes, immediately flush them with clean water. If any solution is swallowed by accident, see medical care immediately.
- 4.Dirty water and solution disposal should comply with local environmental regulations.

About disposal of battery

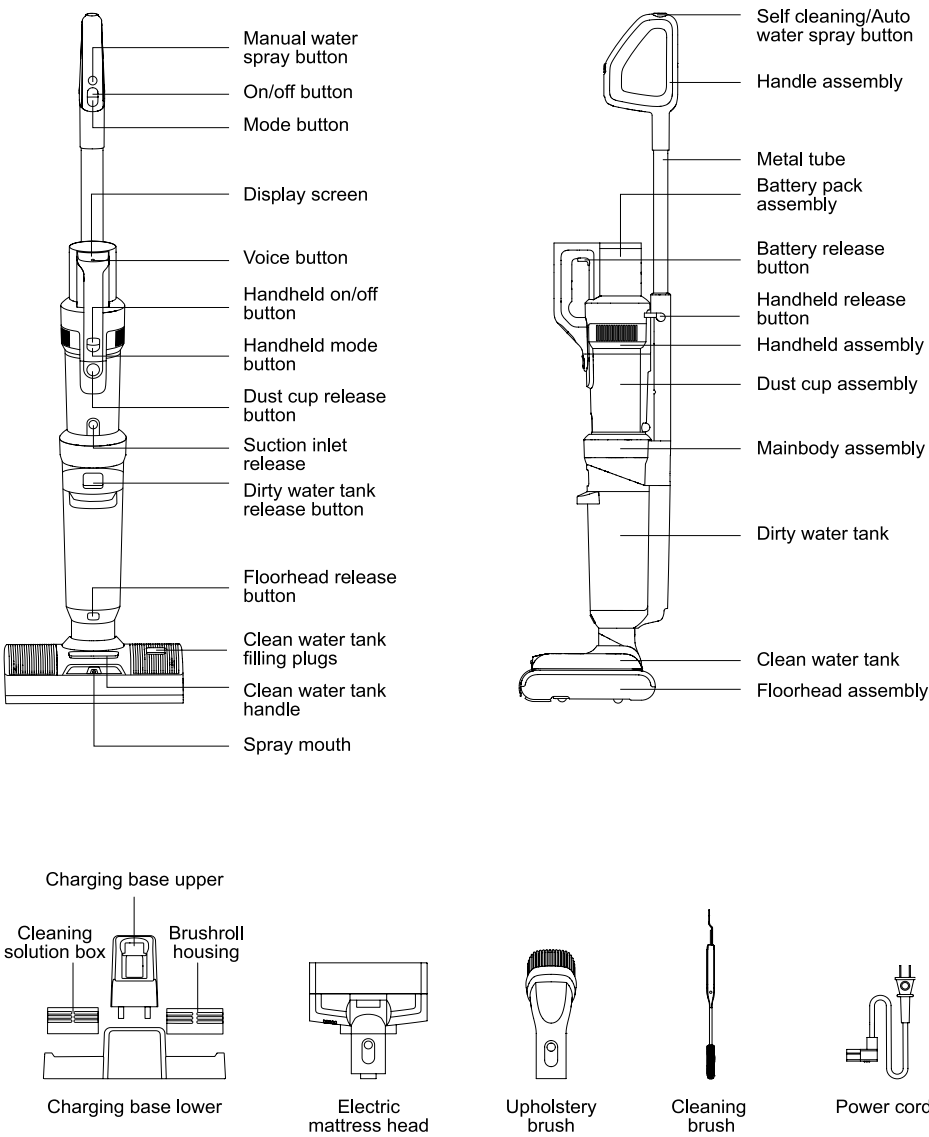
- 1.The battery in the product contains materials harmful to the environment. Take out the battery pack from the product before disposal.
- 2.Turn off the product and unplug adaptor before taking out battery pack.
- 3.Handle the waste battery pack safely and properly. Do not put it into fire, water or soil.
- 4.If the disposed battery leakage causes pollution to skin or clothes, Wash with clean water and see medical care immediately.

The product may have following signs, which have following meanings:

Sign	Meaning
	Pay attention to high-temperature surfaces, as they may become hot during use. Be careful of burns.
	Do not use during bathing or showering.
	Powered head of water vacuuming device
	Do not cover up
IPX4	Water proof grade

Chapter 1 Product Assembly

Part Name



Packing List

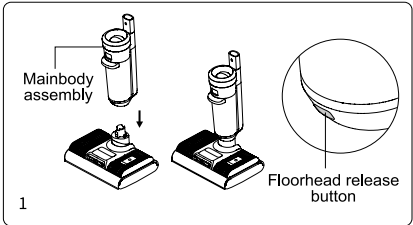
Name	Handle assembly	Battery pack assembly	Handheld assembly	Mainbody assembly	Floorhead assembly
Quantity	1	1	1	1	1
Charging base upper	Charging base lower	Carpet brush	Cleaning solution housing	Electric mattress head	Upholstery brush
1	1	1	1	1	1
Cleaning brush	Power cord	Instruction manual			
1	1	1			

Product assembly and disassembly

Noted: Cut off electricity before product assembly and disassembly.

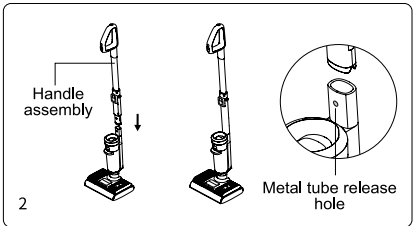
Floorhead assembly and disassembly

To install the floorhead assembly, first align the bottom of the mainbody assembly with the head of the floorhead assembly, insert it down on the floorhead, and push it in until a "click" sound is heard; To take out the floorhead , place the machine on the ground, hold the floorhead with one hand and press floorhead release button with the other hand, lift the mainbody up.(Fig 1)



Handle assembly and disassembly

Insert the end of the metal tube vertically to the port of the mainbody assembly until hearing a "click" sound, ensure that the metal tube is tight and not loose. To remove the metal tube, insert a hard tool such as a screwdriver into the metal tube release hole, and pull the metal tube upwards. (Fig 2)

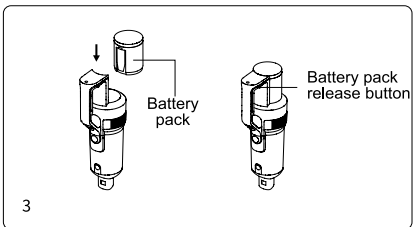


Battery pack assembly and disassembly

1. Slide battery pack along the slot and press the battery pack down firmly until a "click" sound is heard. The battery pack is locked. (Fig 3)

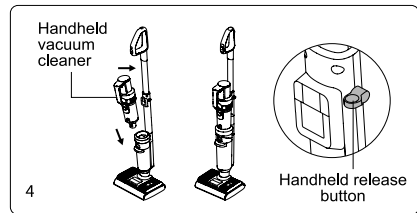
2. Press the battery pack release button and pull the battery pack in the direction opposite to the assembly to unlock the battery pack

Note: Except for the replacement of the battery pack, the battery pack doesn't need to be taken out frequently.



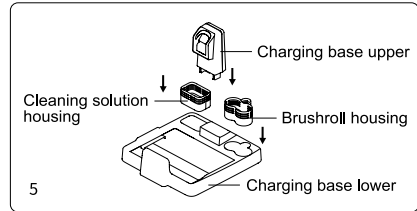
Handheld assembly and disassembly

Take the handheld vacuum cleaner installed with the battery pack, first insert the dust cup suction mouth into the groove of the mainbody cover, then press the handheld body to the installed metal tube, after hearing a "click", the handheld vacuum cleaner is successfully installed. and the product is used as an upright vacuum cleaner in this status. To remove the handheld vacuum cleaner separately, simply press and hold the handheld release button and lift handheld vacuum cleaner diagonally upwards. (Fig 4)



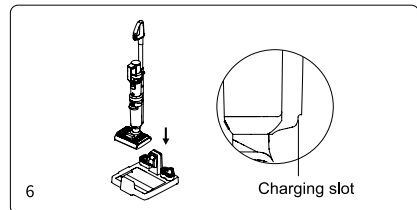
Charge base assembly

Press charging base upper, cleaning solution housing, and brushroll housing to the charging base lower along the illustrated position until a "click" sound is heard. (Fig 5)



Place machine to charging base

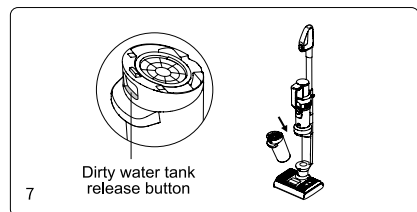
Make sure floorhead is in upright position, hold machine handle to lift the machine, aim charging slot on bottom of machine to the charging socket on charging base and put the machine into charging base. To use the machine, hold machine handle and lift out machine from charging base (Fig 6)



Dirty water tank assembly and disassembly

To assemble dirty water tank, place dirty water tank bottom into mainbody, push dirty water tank towards mainbody until a "click" sound is heard.

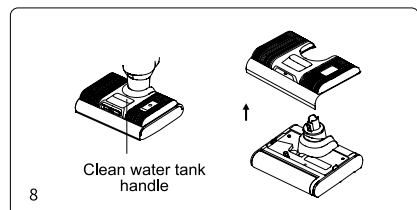
To take off dirty water tank, hold machine with one hand and hold dirty water tank with another hand, press dirty water tank release button to pull out dirty water tank. (Fig 7)



Clean water tank disassembly and assembly

To take off clean water tank, hold the clean water tank handle and pull out the clean water tank.

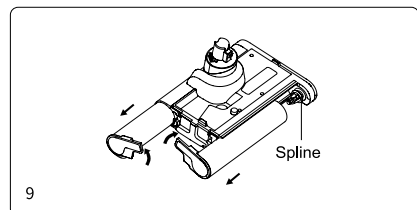
To assemble clean water tank, put the clean water tank back to nozzle, align with the brushroll window. (Fig 8)



Brushroll assembly and disassembly

To remove the brushroll assembly, remove the clean water tank assembly as detailed in (Fig 8), hold the floorhead down with one hand, rotate the brushroll end cap upwards with the other hand, and remove the brushroll outward;

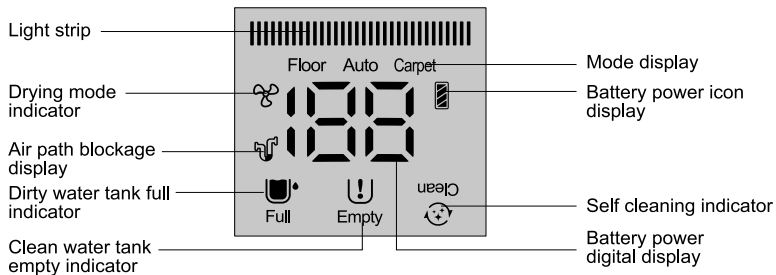
When installing the brushroll assembly, first align the other end of the brushroll with the spline, rotate the brushroll to the end, and then push the brushroll inward, rotate the brushroll end cover down and install it in place, align brushroll cap with the floorhead top surface. (Fig 9)



Chapter 2 Use of the Product

Note: Please fully charge the machine before using it, if there is no power, please charge it in time and use it after it is fully charged.

Display screen and instructions for use



Machine charging

Connect the power cord to the power supply, put the upright vacuum cleaner into the charging base, and start charging.

Note:

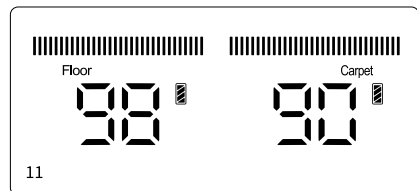
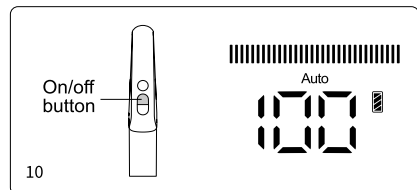
1. Before the first use, please fully charge the battery pack, and before the second charge, please empty the battery to ensure the life of the battery pack;
2. If the product is to be long idled, please charge it once every three months. (Be sure to use the power cord of this product for charging)
3. When not charging, please unplug power cord from the socket to prevent the danger of accidental touching.

Low battery power indicator

1. When the upright cleaner is working, if the voice reminds " Low battery. Please charge the battery ", Please use it after charging.
2. When the upright cleaner is working, if the voice reminds " Low battery. Machine will be turned off soon. Please charge the battery ", the power is about to be exhausted, and it will automatically shut down. Need to charge for use.
3. When using vacuum cleaner, The LED screen displays left working minutes under current working mode. The icon on top right corner of the screen shows left battery power, full grid means 75% to 100% battery; 3/4 grid means to 50% to 75% battery; 1/2 grid means 25% to 50% battery; 1/4 grid means 1% to 25% of the battery; the blank means the battery being empty, and it needs to be charged before use.

Use of upright vacuum cleaner

Press the handle on/off button, the display screen and decorative lights will light up, default is in Auto mode(Fig 10) , press the mode button to switch to Floor mode, press the mode button again to switch to Carpet mode (Fig 11) . Press the handle on/off button again to turn off the machine, the display screen and



the decorative lights go out.

In Auto mode, the machine power changes automatically basing on how much dirty water or dust is detected. And LED light colour changes accordingly. The more dirty water or dust is detected, the more red lights. And the less dirty water or dust is detected, the more blue lights.

Note:

1. When cleaning carpet, please clean the floorhead first (refer to "Cleaning and Maintenance, Floorhead Cleaning" for details) and to deep clean carpet it is recommended to replace the carpet brush. (Fig 14)

2. When the battery level is lower than 20%, it cannot be switched to Carpet mode.

Water spray function

If floor is very dirty, you can choose to spray more water to floor by using manual water spray function to improve floor washing effect. With the machine turned on, press manual water spray button, spray mouth sprays fan-shaped water; release the water spray button to stop spraying water.(Fig 13)

Note:

1. The manual water spray button cannot be used with the on/off button or the mode button at the same time.

2. It is recommended to use carpet mode when there is heavy pollution or water stain.

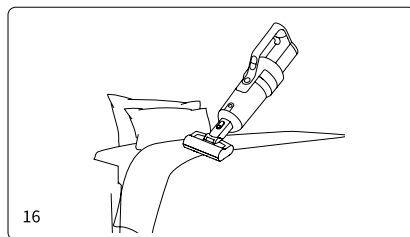
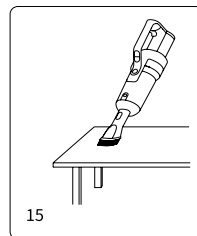
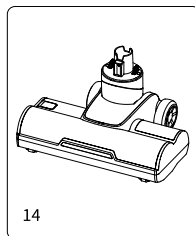
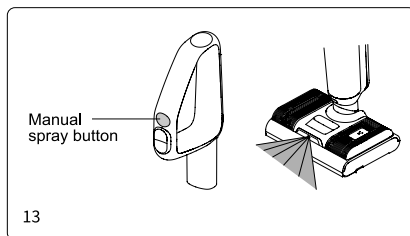
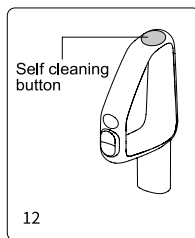
3. When cleaning carpet, please turn off auto water spray function.

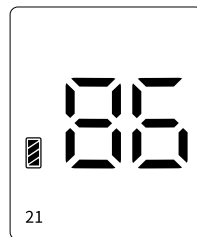
4. Please use the low-foam cleaning solution with this product for cleaning, do not put the easy foaming cleaning solution into the clean water tank for use, otherwise more foam will be generated during use, which may penetrate into the machine and cause danger.

Use of handheld vacuum cleaner

Take off handheld cleaner, press the handheld on/off button, the display screen will light up, default is in Floor mode, press the handheld mode button to switch to Carpet mode. Press the handheld on/off button again to turn off the machine, the display screen go out.

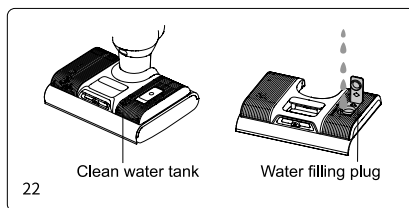
The handheld vacuum cleaner can be assembled with accessories such as crevice tool, upholstery brush, electric mattress head for cleaning different areas (Fig 15-16)





machine is firmly placed on the charging base, the power cord is plugged into the power socket, the power cord is connected to the charging base, and the clean water tank retains at least 1/2 of the water; After completing the self-cleaning, clean the dirty water tank again;

3. When the battery is less than or equal to 10% power, the self-cleaning mode cannot be turned on, and it can be turned on normally after charging for a period of time.



Clean water tank empty indicator

1. When using the water spray function, the voice/screen shows "No clean water, fill in water", please turn off the machine and add water to the clean water tank.
2. When using the self-cleaning mode, if it is detected that there is no water in the clean water tank, the brushroll self cleaning will be stopped. To continue self cleaning, please add water to the clean water tank and empty the dirty water tank, then restart self clean mode.

Fill up clean water tank

Fill up clean water tank: Remove the clean water tank and lift the water filling plug of the clean water tank or directly open the water filling plug of the clean water tank, expose the water inlet hole, pour clean water and cleaning solution in,, and press the water filling plug down to install it to the end, and install it back into the clean water tank. (Fig 22)

Note: When adding clean water, you can add the equipped cleaning solution in the ratio of about one bottle cap to one full tank of clean water.

Dirty water tank full indicator

When the upright vacuum cleaner detects that the dirty water tank is full, the machine will stop and give a voice reminder. Please clean the full dirty water tank and put it back.

Dirty water tank cleaning

Take out dirty water tank upper cover and filter frame, dump the dirty water, assemble the dirty water tank after washing, and put it back on the floorhead (refer to Chapter 3 "Cleaning of dirty water tank" for details).

Brushroll stuck indicator

When the cleaner is in working or cleaning mode, if the brushroll is stuck, the machine will stop and give a voice reminder. Please take out the brushroll, clean up the foreign matter or entangled hair on the brushroll.

Brushroll cleaning

After removing the clean water tank, pull out brushroll, use the cleaning brush to cut off and remove the hair wound around the brushroll, and clean the foreign matter attached to the brushroll and floorhead. Install brushroll and clean water tank back (refer to Chapter 3 "Cleaning of Floorhead assembly" for details).

Air path blocked indicator

1. When the upright cleaner is working /self cleaning mode, if the air path is blocked, the machine will stop working and give a voice reminder. Please clean the possible blockage of the handheld dust cup, floorhead air path and handheld HEPA, check and clean up in turn before continuing to work.
2. When handheld vacuum cleaner is working, if the air path is blocked, cleaner will automatically stop. At this time, the dust cup and HEPA need to be cleaned.

Air path cleaning

Disassemble the dirty water tank, take out dirty water tank upper cover and filter, wash all parts and then assemble back.

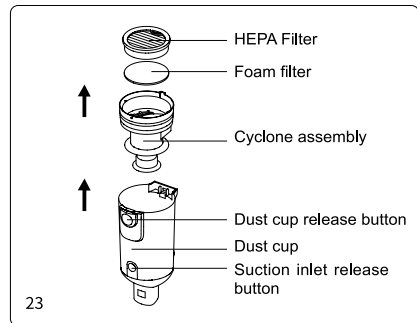
Use pipe brush to clean the dirt, foreign objects and hair inside air path of floorhead. and then load the dirty water tank back into the floorhead assembly.

Remove the dust cup, empty the dust cup, remove HEPA, then take out cyclone and disassemble it, clean all parts and reassemble the dust cup. (Refer to Chapter 3 "Cleaning and Maintenance" for details)

Chapter 3 Cleaning and Maintenance

Dust cup cleaning

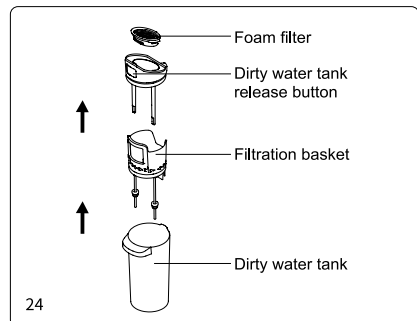
Press the dust cup release button to remove the dust cup from the handheld vacuum cleaner; press the suction inlet release button to open the suction inlet and empty the dust cup; take out cyclone assembly and HEPA filter. Hold the metal mesh, rotate in the direction of the arrow to unlock the metal mesh, and then remove it downward. After cleaning, wiping and drying the parts, assemble all parts back into dust cup, and then installed dust cup back to handheld vacuum cleaner. (Fig 23)



Dirty water tank cleaning

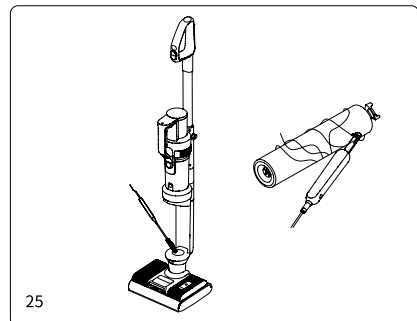
After turning off the vacuum cleaner, remove the dirty water tank, lift the water tank top cover, and remove the foam filter frame from it, open the flip cover of the foam filter frame, take out the foam filter. Pour out dirty water and dirt in the water tank, then wash dirty water tank, water tank cover, foam filter frame and foam filter. If there is foreign matter in the dirty water tank pipe, it can be cleaned with the cleaning brush; dry the above parts after washing. Then reassemble all the parts back into dirty water tank, and then load the dirty water tank into the mainbody and continue to use.(Fig 24)

Note:1. After using upright vacuum cleaner, it is recommended to clean the dirty tank immediately;2. When reinstalling the filter,do not fold the black soft rubber under the filter.



Floorhead cleaning

After removing the brushroll window, brushroll, clean water tank, and dirty water tank, insert the multifunctional cleaning brush through the circular hole below the installation position of the dirty water tank to clear foreign matter and scales in the pipe, and the clogged hair; Use the multi-functional cleaning brush to cut off the tangled hairs on the brushroll; Wipe the machine and the dirty parts removed with a rag, and then put it back on the machine separately (the brushroll can also be put into



the brushroll box to dry); Rinse off the dirt attached to the multi-function cleaning brush and place it in the brushroll box.(Fig 25)

Note: Do not wash floorhead !

Maintenance and Storage

It is recommended to clean the dirty water tank, filter, brushroll and brushroll window after each use. If there is any of below situation: (① Remove dust cup and find HEPA filter leaks dust; ② Foam filter severely damaged; ③ The brushroll has serious hair loss,or has strong vibration and abnormal noise during use), it is recommended to purchase consumables and replace it to avoid machine performance. When not using the machine for a long time, please keep the machine in a cool and dry place, never in direct sunlight or humid environment. If you need to pack the machine into a box, be sure to clean the machine and dry the parts to prevent damage to the machine.

Chapter 4 Troubleshooting

Please check the following points before contacting the after sale service.

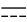
Problem	Possible cause	Solution
Can not start or stop during use	No or Low battery power	Recharge and use in time
	On/off button is not pressed down	Press down on/off button
	Brushroll is entangled	Clean brushroll in time
	Dirty water tank full	Clean dirty water tank
	Battery pack not assembled properly	Reassemble battery pack
	Suction inlet blocked	Clean suction inlet and filter
	Battery pack is not in place	Install the battery pack
Weak suction	Suction inlet blocked	Clean suction inlet and filter
	No HEPA assembled	Assemble HEPA
Abnormal noise	Suction inlet blocked	Clean suction inlet and filter
	No HEPA assembled	Assemble HEPA
Spray mouth does not spray water	Clean water tank empty	Fill clean water tank
	Water spray button not pressed	Press water spray button

Problem	Possible cause	Solution
Spray mouth does not spray water	Clean water tank not assembled properly	Reassemble clean water tank
Water spray out from air path.	Filter is not assembled in the dirty water tank	Assemble filter in dirty water tank
	Soft plastic folds under the filter	Reassemble the filter, the soft glue must not be folded
	HEPA and dust cup are put to use without fully dry	Dry the HEPA and dust cup after washing before use

Note: If the above troubleshooting guide fails to provide a solution or the screen displays error code F1 to F8, please contact after service or local distributor for support.

Chapter 5 Product Specification

Technical parameters

Product Name	Legend Cleaner
Model	DVC-LEGEND
Rated Power	500W
Battery Capacity	4600mAh
Charging Time	5h±0.5
Rated Input	220-240V ~ 50-60Hz
Rated Voltage	21.6V 

Manufacturer Information

Manufacturer	Kingclean Electric Co., Ltd
Address	No.1 Xiangyang Road, Suzhou New District, Jiangsu Province 215009, China



Disposal

The machine, accessories and packaging should be sorted for environmental-friendly recycling.



Do not dispose of the machine into household waste!

Only for EC countries:

According to the European Guideline 1212/19/EU, machine that are no longer usable, and according to the European Guideline 2006/66/EC, defective or used battery packs/batteries, must be collected separately and disposed of in an environmentally correct manner.

Battery packs/batteries:

Integrated batteries may only be removed for disposal by qualified personnel. Opening the housing shell can damage or destroy the machine.
Do not dispose of battery packs/batteries into household waste, fire or water. Battery packs/batteries should, if possible, be discharged, collected, recycled or disposed of in an environmental-friendly manner.
Subject to change without notice.

Warranty Information:

This product enjoys two years warranty from the date of purchase.
Excluded from the guarantee is normal wear, commercial use, alterations to the appliance as purchased, cleaning activities, consequences of improper use or damage by the purchaser or a third person, damage, that can be attributed to external circumstances.

